

# ਦੁਲੈਂਕੜ ( = ) ਦੀ ਵਰਤੋਂ ਨਾਲ ਸ਼ਬਦ ਪੂਰੇ ਕਰੋ।

ਓਠ



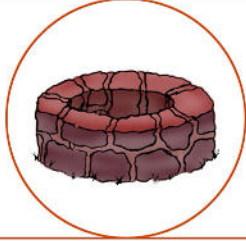
ਊਠ

ਭਾਲ



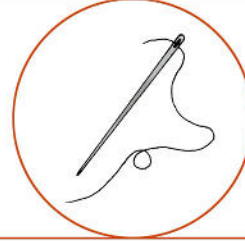
ਭਾਲੂ

ਖਹ



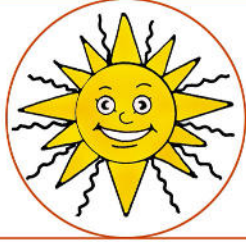
ਖੂਹ

ਸਈ



ਸੁਈ

ਸਰਜ



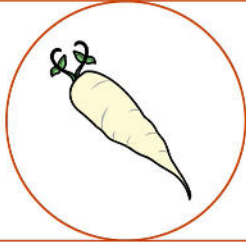
ਸੂਰਜ

ਅਮਰਦ



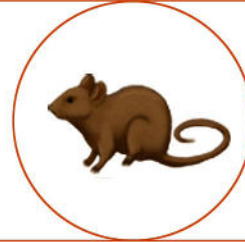
ਅਮਰੁਦ

ਮਲੀ



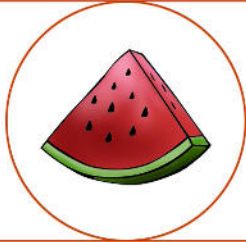
ਮੂਲੀ

ਚਹਾ



ਚੂਹਾ

ਤਰਬਜ



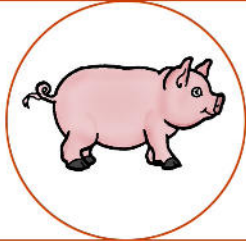
ਤਰਬੂਜ

ਚਾਕ



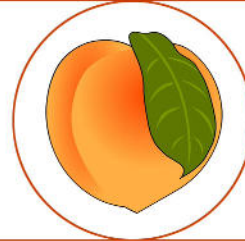
ਚਾਕੂ

ਸਰ



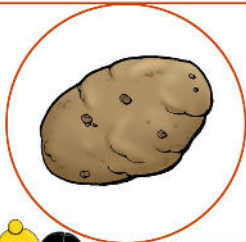
ਸੂਰ

ਆੜ



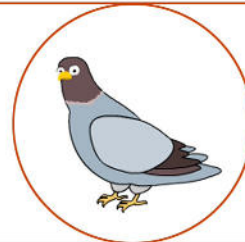
ਆੜੂ

ਆਲ



ਆਲੂ

ਕਬਤਰ



ਕਬੂਤਰ