

# ਦੁਲੈਂਕੜ (= ) ਦੀ ਵਰਤੋਂ ਨਾਲ ਸ਼ਬਦ ਪੂਰੇ ਕਰੋ।

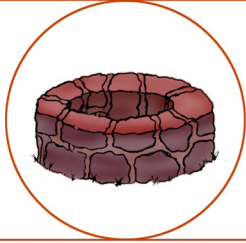
ਓਠ



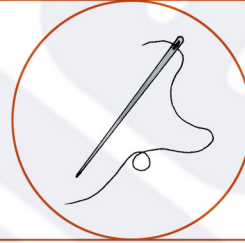
ਭਾਲ



ਖਹ



ਸਈ



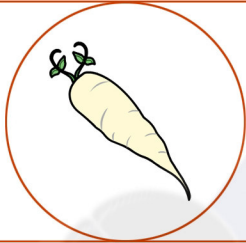
ਸਰਜ



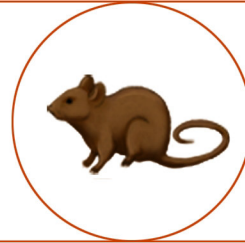
ਅਮਰਦ



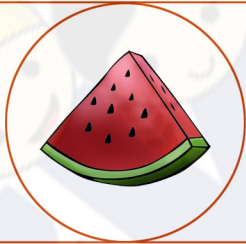
ਮਲੀ



ਚਹਾ



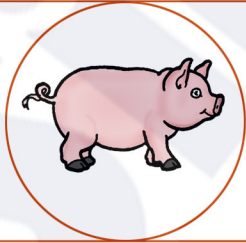
ਤਰਬਜ



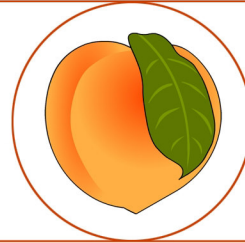
ਚਾਕ



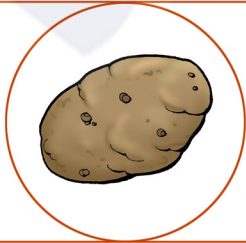
ਸਰ



ਆੜ



ਆਲ



ਕਬਤਰ

